

Because the world is
more than two thirds water



Sweden Yachts 45

SWEDEN YACHTS



Looks great. Performs even better

Whenever we design a new yacht, we always strive to achieve the best possible sailing characteristics for a boat of that particular size. In this way, the Sweden Yachts 45 carries on and embellishes the proud heritage of Sweden Yachts. Every detail, from the shape of the hull to the design of the rig, works together as a harmonious whole, creating an unmatched yacht for serious sailing. Sail and rig handling have been simplified to minimise effort and add more pleasure to the whole sailing experience. The cockpit is ergonomically designed, giving the helmsman a relaxed, well-balanced environment even under really tough conditions in open sea, hard weather sailing.

A yacht with a high feel-good factor

The Sweden Yachts 45 is a fast yacht, very fast. The design team, Peter Norlin and Jens Östman, set out to create the most exciting 45-footer ever built. And owners agree that they have succeeded. "Sailing a Sweden Yachts 45 makes you feel good" is a frequent comment from owners and the lucky yachtsmen who have been invited on board for a test cruise. So it is no coincidence that the Sweden Yachts 45 was elected "Sailboat of the Year 2000" by the international yachting magazine *SAIL*.

"One of the most memorable sails of my life. In 20-25 knots of wind we sliced through the rest of the fleet at eight knots upwind. Steady as a rock, we pushed her through tack after tack, experimenting to gain maximum speed. Get the timing wrong and she would spin out, unless you dumped the mainsail. Huge fun."

Roger Brydges, UK Government's Marine Accident Investigation Branch, sailing the Sweden Yachts 45 off the west coast of Sweden.

A dream to steer

It is hard to let go. Once you have taken the helm and set out on your first cruise in a Sweden Yachts 45, you will feel that your dreams have come true. The yacht behaves just as well on short, active racing tacks as it does cruising downwind on a sunny afternoon. The self-tacking jib is a great advantage, especially when short tacking under fresh, upwind conditions.

Putting the helmsman first

The cockpit is designed for maximum efficiency and comfort, both under sail and in harbour. The helm and the winches are positioned for exact operation with minimum effort. Wherever you sit in the cockpit, you are always comfortable. And you are seated on smooth-surfaced, top quality, hand-picked teak from sources who guarantee that the wood is grown under the control of environmental authorities. The whole cockpit layout is the result of constant development work, based on years of sailing experience, making it as near perfect as possible.





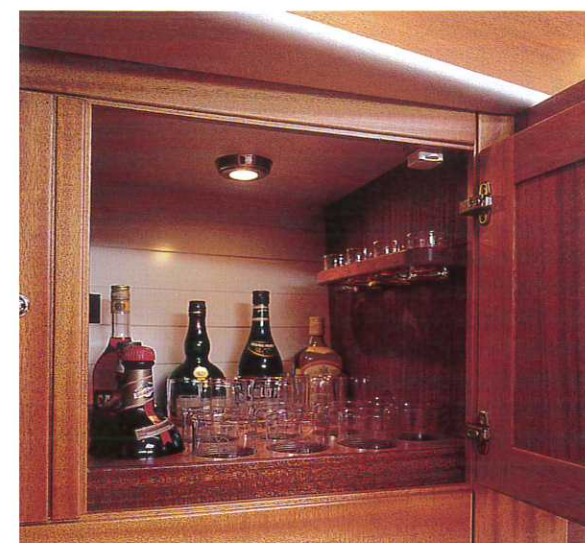
The Sweden Yachts 45 in a 30-knot wind off Marstrand on the Swedish west coast.

A yacht for pleasure and leisure

A wealth of inner values



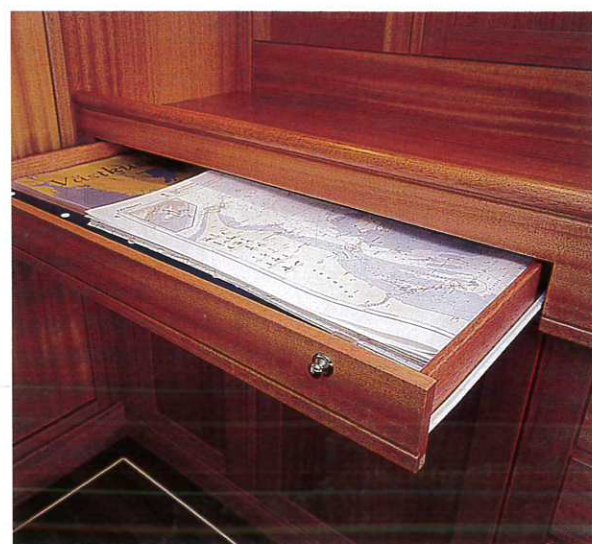
Room for entertaining,
living and sailing.



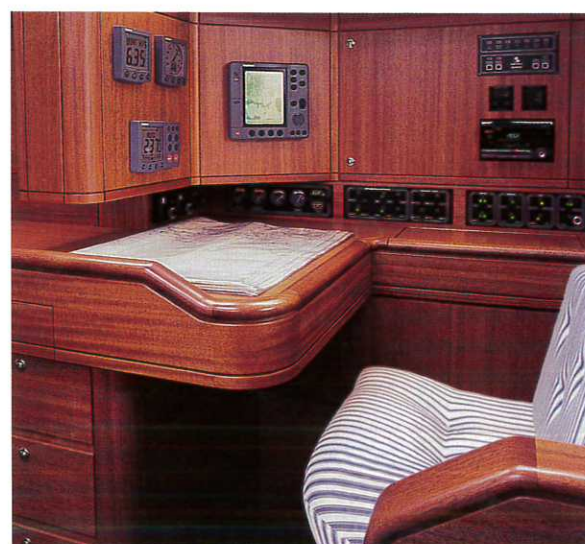
Custom made drinks cabinet.



Hidden away behind a panel, yet easy to reach.



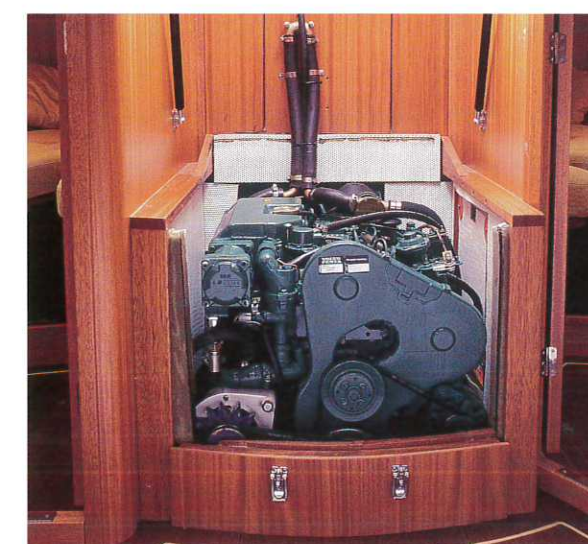
Handy storage for charts etc.



Chartroom and navigator's seat. Fully prepared for laptop plug-in.



At hand and ready to use.



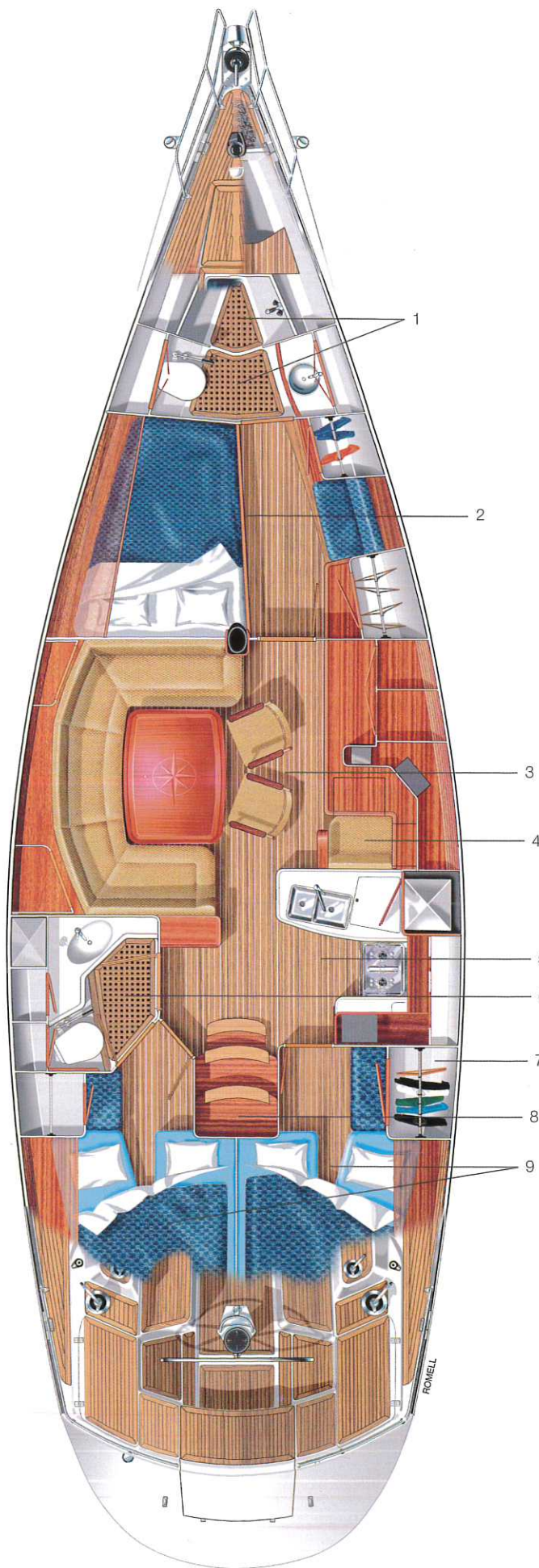
Easy access to the engine via the gas strut operated engine cover/staircase.

Every detail finished with detailed finish

When you enter the spacious interior of a Sweden Yachts 45, you will understand the meaning of world-class joinery. Light or slightly darker mahogany, or other fine woods like teak and cherrywood are crafted into a complete interior. With inlaid woodwork details accentuating the whole effect. Superior craftsmanship is the keynote throughout. Every piece of wood is oil varnished five times before being fitted together into modules. The floorboards are carefully insulated to eliminate the slightest creaking. Upholstery is specified by the yacht owner, in a Scandinavian design concept based on the principle that "less is more". The whole atmosphere is one of Nordic Light, the same magic light captured by Scandinavian painters at Skagen, Denmark, at the end of the 19th century. In short, the interior of a Sweden Yachts 45 is tailored to perfection, right down to the last detail.

Harmonious living

A Sweden Yachts 45 is primarily built for sailing, but it is also a yacht for luxurious living afloat. Functionality and comfort rule the quarters below deck. The yacht is really spacious, with a roomy saloon for entertaining, three double cabins and two generous head compartments with shower. There is locker and stowage space aplenty, and space prepared for several custom-made glass and drinks cabinets and an ice-maker. The galley itself would shame many a modern apartment for design, equipment and convenience. Everything, in fact, is planned and crafted to bring extra comfort and pleasure to your leisure on board the Sweden Yachts 45.



1. Forward head compartment with toilet and shower.
2. Owner's cabin with cosy corner.
3. Saloon.
4. Navigator's seat.
5. Galley.
6. Head compartment with shower.
7. Wardrobe for wet weather gear.
8. Gas strut operated engine cover/staircase.
9. Double cabins.



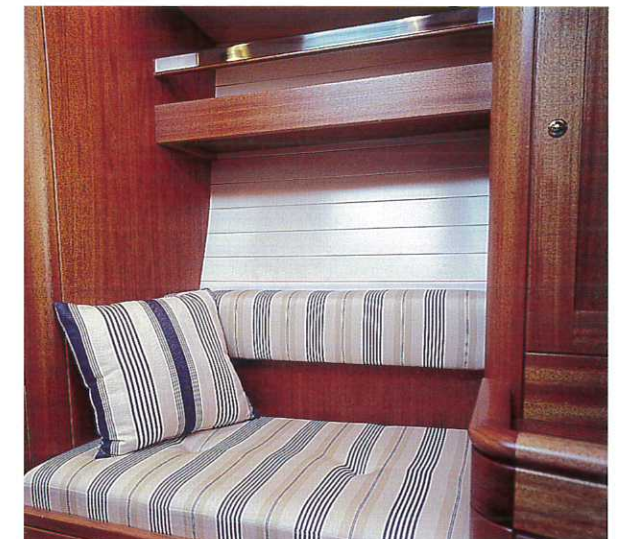
Head compartment with toilet and shower.



View of owner's cabin.



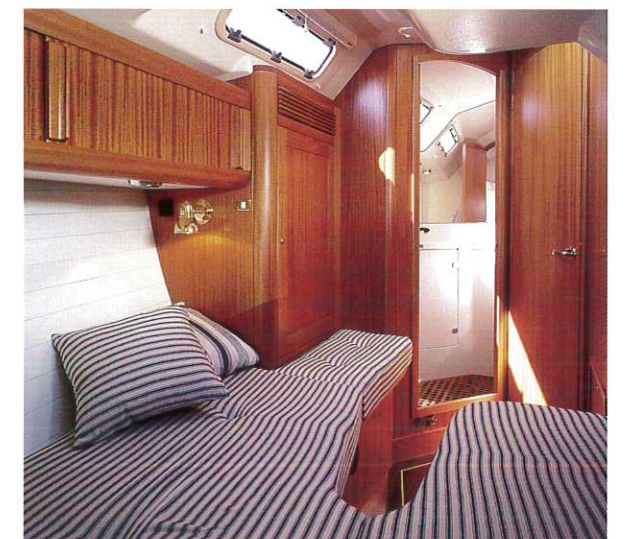
Chest of drawers (Option).



Cosy corner in owner's cabin.



Wardrobe with built-in drainage and heating for wet weather gear.



Port side double cabin. Reverse layout of starboard cabin.



The refrigerator is hidden behind a wood panelled door.



The pull-out galley fan/cooker light is elegantly integrated into the woodwork.



Stainless steel trim accentuates the impression of top class quality and hygiene.

First class galley

Food is an important part of harmonious living. Not just eating the various dishes, but the whole ritual of preparing the food. The galley on board the Sweden Yachts 45 is really first class. It is equipped with everything you need from an oven to a refrigerator and freezer. There is even space prepared for a microwave and ice-maker. Everything is in its place, within comfortable reach. With smooth, easy to clean corean surfaces to help you and your family or crew to keep the cooking area as nice and shining as the rest of the yacht.



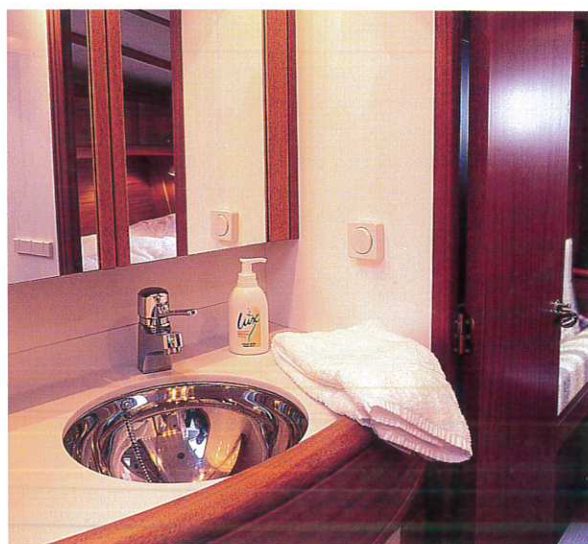
Dish washer for a perfect galley (Option).



Aft head compartment, complete with toilet, shower and generous storage space.



Toilet and washroom easily accessible for everybody on board. Two entrances, one directly from aft port cabin.



More like a luxury penthouse than a yacht!

Clean lines

Who would come up with the idea of designing a head compartment with shower in the forepeak of a yacht. It's really a brilliant idea. The forward shower compartment of the Sweden Yachts 45 has a skylight, which can be opened to vent away any damp from the shower and neighbouring owner's cabin. The skylight also serves as an emergency exit.

The Sweden Yachts 45 has two head compartments, each with its own shower. The interior of the washroom and shower areas follows up the design philosophy of the whole yacht. Design as a matter of functionality, with clean lines for extra quality and good looks.





Your home away
from home

Relaxed living

The Sweden Yachts 45 is, of course, designed as a superior sailing yacht. But, we have also remembered the importance of entertaining guests and relaxing with the family. The cockpit is spacious to allow you, your family and guests to sit very comfortably when socialising or just enjoying the view. Care for a dip in the sea? The folding section in the 45's stern is easy to swim from, it provides a good shower point and it simplifies handling the tender or inflatable dinghy.

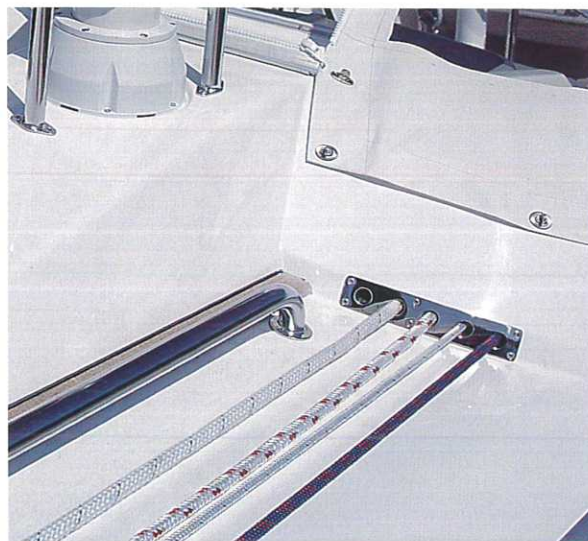




All winches within easy reach.



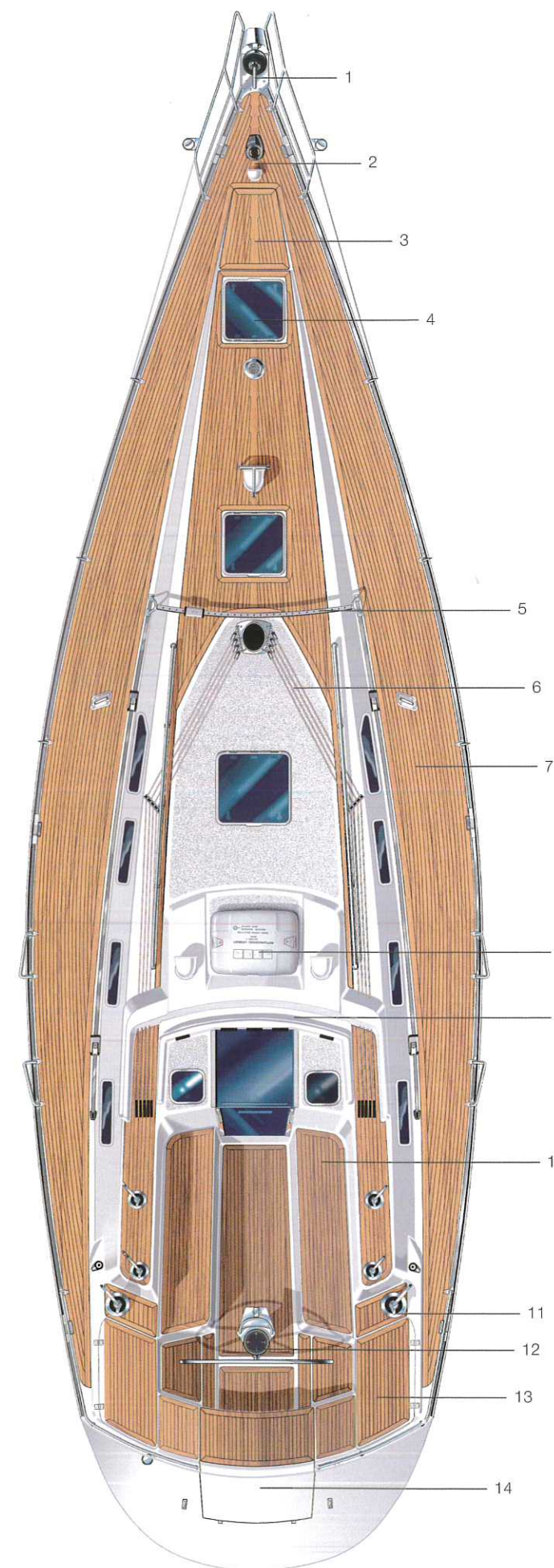
The self-tacking jib track is well positioned with the sheet running from the car up the mast before being led aft to the cockpit.



Halyards and control lines neatly organised.



We are prepared to incorporate custom solutions, like teak toe rail and special fittings.



Deck layout

1. Furling jib.
2. Windlass and chain stowage below.
3. Large, deep stowage room with watertight hatch.
4. Skylight above forward shower.
5. Self-tacking jib track.
6. All sheets well organised and led to the cockpit.
7. Teak deck as shown, standard.
8. Place prepared for life raft.
9. Sprayhood locker.
10. Ergonomically designed cockpit with all equipment within easy reach.
11. All winches are stainless steel, self-tailing.
12. Pedestal steering.
13. Port and starboard stowage space, very roomy.
14. Fold-out platform.



Built without compromise

A Sweden Yachts 45 is equipped with only the best. Every item and detail is selected with the outmost care to meet the highest standards of performance and appearance.



Retractable gennaker bowsprit (Option).



Park Avenue boom in carbon (Option).



Self-tacking jib system track neatly supported at the genua track.



Wide roomy sprayhood for excellent weather protection.



Fold-out bathing platform. Typical Sweden Yachts design.



The Sweden Yachts 45

Design Norlin/Östmann

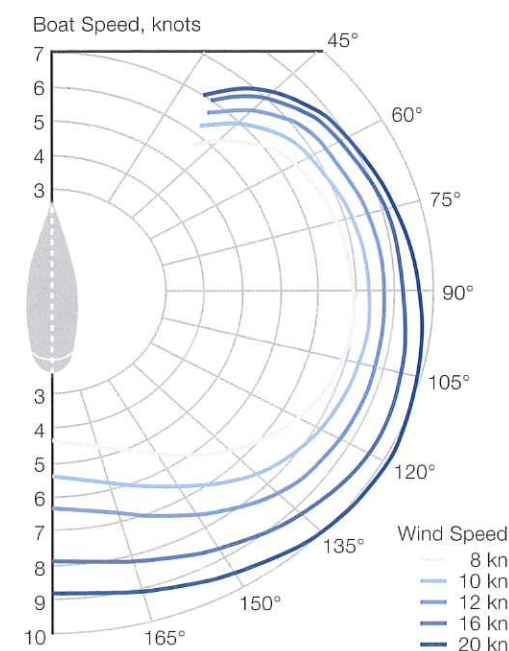
Standard features

Teakdeck
Teak in cockpit
Wheel covered in elkhide
Large Sprayhood. S.S. tubes & grab handle with elkhide
Mooring bollards, midship
Windlass, 1000 W/24 V
Anchor and chain
4-bladed folding propeller
Furling jib
Furling jib system, Furlex
Self-tacking headsail system
Mainsail with cover
Swept spreaders, no babystay
Backstay adjuster
Deck light
Windex
Cockpit table
Shorepower 220 V
Inverter, 1500 W/24 V – 220 V
Battery charger, 50 A/24 V
Alternator, 95 A/24 V
Battery capacity, 420 Ah/24 V
Calorifier 40 l heating by 220 V shorepower and by the engine
Bilge pump, 24 V
Cabin heater, 5 kW
Refrigerator, 24 V, water cooled
Freezer, 24 V, water cooled
3-burner gas stove with oven
Cushions and curtains
Sprung mattress and bedding mattress in owners cabin
Floorboards, varnished
Interior Oil varnished mahogany
Holding tanks for both toilets
Epoxy treatment (200 my), below waterline

Dimensions

Length overall	14.15 m	46'5"
Waterline length	11.90 m	39'
Beam	4.18 m	13'7"
Draft, std keel	2.30 m	7'6"
Draft, wing keel version (option)	1.98 m	6'6"
Displacement	12,400 kg	27,400 lbs
Ballast	5,200 kg	11,500 lbs
I	18.20 m	59'7"
J	5.30 m	17'5"
P	17.75 m	58'3"
E	6.00 m	19'7"
Engine	Volvo Penta 75HP with S-drive & fresh water cooling	
Water tanks, stainless steel	435 l	
Diesel tank, stainless steel	285 l	

Sweden Yachts reserves the right to changes in standard specification and the pictures in this brochure may show equipment not included in the standard specification.

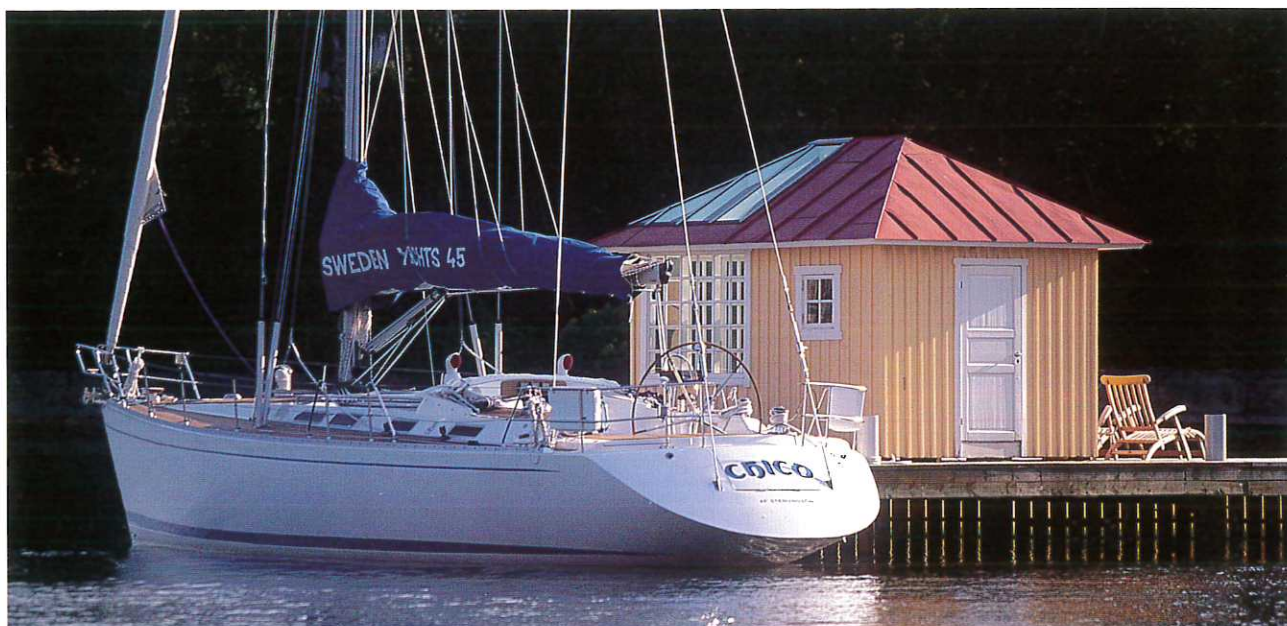


Polar diagram



The yacht is built to CE Boat Category "A-ocean" with "Det Norske Veritas" as the Notified Body.

This is Sweden Yachts



We build sailing yachts ranging from 37 to 80 ft at our yard in Stenungsund on the west coast of Sweden. Our first boat, launched in 1976, was a 12-metre R-yacht, specially built as the Swedish challenger to the America's Cup. Since then, we have consistently enhanced our well-earned reputation as one of the world's leading builders of quality boats. In short, every yacht from Sweden Yachts combines excellent sailing characteristics, first class design and craftsmanship throughout every detail.

SWEDEN YACHTS

Kungsviken, SE-473 99 Henån, SWEDEN. Tel. +46 (0)304 596 00, +46 (0)760 244 07 77, e-mail sales@swedenyachts.se

www.swedenyachts.se